

# Ailgylchu Poteli

Beth sydd yn y bocs ailgylchu ar ddiwedd yr wythnos?

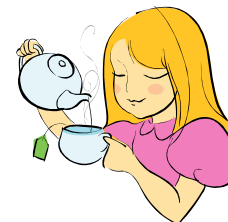


Maint y poteli, y caniau a'r cartonau					
<b>Sudd 1 litr</b>	Lemonêd ½ litr	Gwin 75cl	Cola 300ml	Llefrith 1 litr	Diod Chwaraeon 250ml

**Mae Mari yn gwneud diod ffrwythau heb alcohol i'w ffrindiau**

250ml o sudd oren  
100ml o sudd afal  
Hanner litr o lemonêd  
150ml o sudd grawnwin  
1 afal wedi ei falu'n fân  
1 oren wedi ei dorri'n fân

Hylif	Defnyddio	Maint y botel
Siampw	25ml 10 gwaith	300ml
Hylif golchi llestri	20ml 20 gwaith	450ml
Sôs coch	15ml 10 gwaith	500ml
Cwstard	200ml 4 gwaith	¾ litr
Swigod Bath	50ml 10 gwaith	½ litr



<b>Cwpan</b>	<b>200ml</b>
<b>Mwg</b>	<b>¼l</b>
<b>Gwydr</b>	<b>100 ml</b>
<b>Can</b>	<b>330ml</b>
<b>Gwydr gwin</b>	<b>150 ml</b>
<b>Llwy moddion</b>	<b>5 ml</b>
<b>Carton diod</b>	<b>250ml</b>



Rhaid cael ddŵr arbennig i'r anifeiliaid sy'n cael ei werthu mewn poteli 5 litr.



Mae Dad yn cael annwyd ac yn cymryd 2 lwyaid o foddion 3 gwaith y dydd am wythnos. Mae'r botel moddion yn dal 250ml.



Mae gan y teulu 1 ci, 3 bochdew, 2 neidr a 10 pry pric.



Anifail	Tua faint o ddŵr mewn wythnos
<b>Ci</b>	4 litr
<b>Pry pric</b>	10ml
<b>Eliffant</b>	1000 litr
<b>Neidr</b>	50ml
<b>Ceffyl</b>	200 litr
<b>Bochdew</b>	1500ml

Mewn diwrnod neu * mewn wythnos					
		Mam	Dad	Ifan	Mari
<b>Tê</b>	<b>cwpan</b>	3	2	0	1
<b>Coffi</b>	<b>mwg</b>	2	4	0	0
<b>Llefrith</b>	<b>gwydr</b>	1	½	2	1
<b>Sudd oren</b>	<b>gwydr</b>	1	0	2	2
<b>Cola</b>	<b>can</b>	0	1	2	1
<b>Lemonêd</b>	<b>gwydr</b>	1	2	1	1
<b>Diod chwaraeon</b>	<b>carton</b>	0	3 *	2*	2*
<b>Gwin</b>	<b>gwydr</b>	4*	6*	0	0

# The Jones's waste

What's in the recycling box at the end of the week?

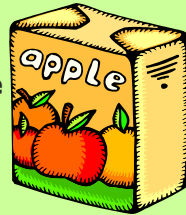


Size of bottles, cans and cartons					
1 litre Juice	½ litre Lemonade	75cl Wine	300ml Cola	1 litre Milk	250ml Sports drink

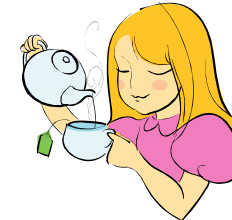
Mari makes a non-alcoholic fruit drink for her friends.



250ml of orange juice  
100ml of apple juice  
Half a litre of lemonade  
150 ml of grape juice  
1 diced apple  
2 oranges



Liquid	Use	Size of bottle
Shampoo	25ml 10 times	300ml
Washing-up liquid	20ml 20 times	450ml
Tomato sauce	15ml 10 times	500ml
Custard	200ml 4 times	¾ litres
Bubble bath	50ml 10 times	½ litres



Cup	200ml
Mug	¼l
Glass	100
Can	330ml
Wine glass	150 ml
Medicine spoon	5 ml
Drink carton	250ml



The animals need special water which is sold in 5 litre bottles.



Dad catches a cold and takes 2 spoonfuls of medicine 3 times a day for a week. The medicine bottle holds 250ml.



The family has 1 dog, 3 hamsters, 2 snakes and 10 stick insects.



In a day or * in a week					
		Mum	Dad	Ifan	Mari
Tea	cup	3	2	0	1
Coffee	mug	2	4	0	0
Milk	glass	1	½	2	1
Orange juice	glass	1	0	2	2
Cola	can	0	1	2	1
Lemonade	glass	1	2	1	1
Sports drink	carton	0	3 *	2*	2*
Wine	Wine glass	4*	6*	0	0

Animal	How much water in a week
Dog	4 litres
Caddis fly	10ml
Elephant	1000 litres
Snake	50ml
Horse	200 litres
Hamster	1500ml