

Teithoedd, llythrennedd



a chyfathrebu

- Datblygu geirfa Cymraeg; drwy enwi adeiladau / manau perthnasol i'r plant e.e. gwrthrychau gallent weld o amgylch y gymuned (golau stryd, arwydd, parc, ysgol, gwahanol siopau ayyb.)
- Adrodd stori 'Elen Benfelen' gan ddefnyddio dull Pie Corbett.
- Gwrando a thrafod amrywiaeth o straeon sy'n pwysleisio bod teuluoedd yn gallu amrywio e.e. 'Llund Llaw o Fotymau' / 'Elen Benfelen'.
- Ymateb i gwestiynau gan ddilyn y rhaglen 'Drilio Disglair' i ddatblygu geirfa/patrymau iaith: 'Oes brawd/ chwaer gyda thi?' (Oes / Nac oes) / 'Ydy dy ben-blwydd ym mis Mai?' (Ydy / Nac ydy)
- Dilyn rhaglen ffoneg POPAT wrth ddatblygu adnabyddiaeth o seiniau a graffem llythrennau.

Gwyddoniaeth a



Thechnoleg

- Dilyn llwybrau a datrys problemau codio syml (dilyn cyfarwyddiadau) / BeeBot.
- Creu lluniau a magu hyder wrth ddefnyddio'r rhaglen JiT ar Hwb.
- Dysgu ac arsylwi cylched bywyd pili-palaod.
- Coginio a blasu uwd i gyd-fynd â stori 'Elen Benfelen'.

Dyniaethau



- Adnabod ein teuluoedd a phwy sy'n bwysig i ni?
- Trafod grwpiau clybiau allgyrsiol h.y. ydyn nhw'n mynychu â chlwb gymnasteg / rygbi / pêl-droed?
- Gwrando, dysgu a chanu Hwiangerddi Cymreig.
- Adnabod adeiladau / manau perthnasol e.e. ystafelloedd y tŷ / gwrthrychau sydd i weld o amgylch y gymuned (golau stryd, arwydd, parc, ysgol, gwahanol siopau, llyfrgell ayyb.)
- Plannu blodau gyda garddwyr Gerddi Fictoria.
- Cymharu nodweddion y tymhorau wrth arsylwi ar dyfiant planhigion a dail y coed o amgylch tir yr ysgol/ eu gerddi/ Gerddi Fictoria.
- Creu mapiau syml eu hun o'u cymuned.
- Edrych ar luniau o'r plant fel babanod ac arsylwi faint maen nhw wedi tyfu a newid yn barod.

Cymuned

Pwy a beth sy'n bwysig i mi?

Mathemateg a



Rhifedd

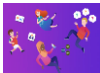
- Dysgu ac adnabod misoedd y flwyddyn.
- Adnabod misoedd ein pen-blwyddi.
- Cyfatebu digidau â Numicon / ciwbiau / cerrig ayyb.
- Datblygu sgiliau adio a thynnu.
- Cyfri ymlaen o wahanol rifau.
- Trefnu a didoli gwrthrychau / rhifau o'r lleiaf i'r mwyaf.

Celfyddydau Mynegiannol



- Creu hunanbortreadau.
- Arlunio lluniau o'n teuluoedd / pobl bwysig.
- Chwarae gydag offer jync a chreu adeiladau / gwrthrychau megis arwyddion, 'band-stand', coed, blychau post, gorsaf fws ayyb.
- Creu breichled swyn sy'n cynrychioli pobl neu lefydd pwysig i ni.

Iechyd a Ues



- Mynd am dro o amgylch yr ardal leol e.e. Parc y Gnoll (llyn gwaelod) / Gerddi Fictoria.
- Sesiynau Ysgol Goed.
- Datblygu sgiliau echddygol bras, sgiliau llawdrin manwl a chydysmud llaw-llygad.
- Datblygu symudiadau'r corff wrth 'Symud gyda Tedi'.
- Mwynhau cystadlu yn y Mabolgampau.
- Adnabod a thrafod ymddygiadau diogel / peryglus yn deillio o stori 'Elen Benfelen' a thrafodaethau am sut i ofalu am ein gerddi h.y. planhigion / trychfilod / anifeiliaid.

Languages, Literacy and Communication



- Develop Welsh vocabulary through naming buildings / structures and relevant areas e.g. structures they may see in their community (street lamps, signposts, parks, schools, shops etc.)
- Retell the story 'Goldilocks and the Three Bears' by using Pie Corbett's method.
- Listen and discuss a variety of stories that show that families can be different e.g. 'A Handful of Buttons'.
- Respond to questions by following the 'Drilio Disglair' plan to develop our Welsh vocabulary, grammar and sentence structures.
- Develop letter recognition and sounds by following the phonics program 'POPAT'.

Science and Technology



- Follow paths and solve simple coding problems by following instructions and using the BeeBot.
- Create pictures and develop confidence in using JiT on Hwb.
- Observe the life cycle of a butterfly.
- Reinforce their understanding of 'Goldilocks and the Three Bears' by cooking and tasting porridge.

Humanities



- Recognise our families and important people in our lives.
- Discuss which clubs we are a part of i.e. gym/ rugby/ football etc.
- Listen, learn and sing traditional Welsh Nursery Rhymes e.g. 'Dacw di yn eistedd aderyn du.'
- Recognise key buildings and places in our community e.g. school, house, shops, post box, library etc.
- Plant flowers with the gardeners at Victoria Gardens.
- Compare features of different seasons by observing plants and leaves on the trees around the school grounds, gardens and Victoria Gardens.
- Create simple maps of their own community.
- Compare and contrast pictures of ourselves as babies/toddlers with current pictures.

Community

Who and what is important to us?

Mathematics and Numeracy



- Learn the months of the year.
- Recognise our birthday months.
- Correspond numbers to Numicon / multi-links/ stones etc.
- Develop addition and subtraction skills.
- Count on from any given number.
- Ordering and classifying objects and numbers from smallest to biggest.

Expressive Arts



- Create self-portraits.
- Create paintings, drawings and artworks of our family / important people and places.
- Create different buildings and structures through junk modelling e.g. signposts, bandstand, trees, post box, bus station etc.
- Create a charm bracelet with buttons and gems which represents a person/ place of importance to us.

Health and Well-being



- Walk around the local area e.g. Gnoll Park (bottom lake) / Victoria Gardens.
- Forest School sessions.
- Practise and develop the gross/fine motor skills and hand-eye coordination.
- Develop body movements by following 'Symud gyda Tedi'.
- Prepare for and compete in the School Sports Day.
- Recognise and discuss safe or dangerous behaviour such as the instances mentioned in 'Goldilocks and the Three Bears'
- Understand how to care for plants, bugs and animals.