

Teithoedd, llythrennedd



a chyfathrebu

- Datblygu geirfa Cymraeg; drwy enwi rhannau'r corff/ adeiladau / mannau perthnasol i'r plant e.e. gwrthrychau gallent weld o amgylch y gymuned (golau stryd, arwydd, parc, ysgol, gwahanol siopau ayyb.)
- Adrodd stori 'Elen Benfelen' (gan ddefnyddio dull Pie Corbett.)
- Gwrando a thrafod amrywiaeth o straeon sy'n pwysleisio bod teuluoedd yn gallu amrywio e.e. 'Llund Llaw o Fotymau' / 'Elen Benfelen'.
- Ymateb i gwestiynau gan ddilyn y rhaglen 'Drilio Disglair' i ddatblygu geirfa/patrymau iaith: 'Oes brawd/ chwaer gyda thi?' (Oes / Nac oes) / 'Ydy dy ben-blwydd ym mis Mai?' (Ydy / Nac ydy)
- Dilyn rhaglen ffoneg POPAT wrth ddatblygu adnabyddiaeth o seiniau a graffem llythrennau.

Gwyddoniaeth a



Thechnoleg

- Dilyn llwybrau a datrys problemau codio syml (dilyn cyfarwyddiadau) / BeeBot.
- Dysgu ac arsylwi cylched broga.
- Coginio a blasu uwd tra'n atgyfnerthu'r stori 'Elen Benfelen'.

Dyniaethau



- Adnabod ein teuluoedd a phwy sy'n bwysig i ni.
- Trafod grwpiau, clybiau allgyrsiol h.y. ydyn nhw'n mynychu â chlwb gymnasteg / rygbi / pêl-droed?
- Gwrando, dysgu a chanu Hwiangerddi Cymreig.
- Adnabod adeiladau / mannau perthnasol e.e. ystafelloedd y tŷ / gwrthrychau sydd i weld o amgylch y gymuned (golau stryd, arwydd, parc, ysgol, gwahanol siopau, llyfrgell ayyb.)
- Plannu blodau yn ein hardal allanol.
- Trafod nodweddion y tymhorau.

Cymuned

Pwy a beth sy'n bwysig i mi?

Mathemateg a



Rhifedd

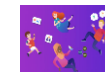
- Dysgu ac adnabod dyddiau'r wythnos a'r tymhorau.
- Gwahaniaethu a dosbarthu gwrthrychau mawr a bach.
- Cyfatebu digidau â Numicon / ciwbiau / cerrig ayyb.
- Dysgu sut i fesur cynhwysedd e.e., llawn, gwag, a.y.y.b.

Celfyddydau Mynegiannol



- Creu hunanbortreadau.
- Arlunio lluniau o'n teuluoedd / pobl pwysig.
- Chwarae ac arbrofi gydag offer jync.
- Creu breichled swyn sydd yn cynrychioli bobl neu lefydd pwysig.

Iechyd a Ues



- Mynd am dro o amgylch yr ysgol. Adnabod a chymharu gwahanol ystafelloedd e.e., y neuadd, y llyfrgell, y ffreutur a.y.y.b.
- Datblygu sgiliau echddygol bras, sgiliau llawdrin manwl a chydymud llaw-llygad.
- Datblygu symudiadau'r corff wrth 'Symud gyda Tedi'.
- Mwynhau cystadlu yn y Mabolgampau.
- Adnabod a thrafod ymddygiadau diogel / peryglus yn deillio o stori 'Elen Benfelen' a thrafodaethau am sut i ofalu am ein gerddi h.y. planhigion / trychfilod / anifeiliaid.

Languages, Literacy and Communication



- Develop Welsh vocabulary through naming body parts, buildings / structures and relevant areas e.g. structures they may see in their community (street lamps, signposts, parks, schools, shops etc.)
- Retell the story 'Goldilocks and the Three Bears' by using Pie Corbett's method.
- Listen and discuss a variety of stories that show that all families can be different e.g. 'A Handful of Buttons', 'Goldilocks and the Three Bears'.
- Respond to questions by following the 'Drilio Disglair' plan in order to develop our Welsh vocabulary, grammar and sentence structures.
- Follow the phonics program 'POPAT' to develop letter sounds and recognition.

Science and Technology



- Follow paths and solve simple coding problems by following instructions and using the BeeBot.
- Observe the life cycle of a frog.
- Reinforce the story 'Goldilocks and the Three Bears' by cooking and tasting porridge.

Humanities



- Recognise our families and important people in our lives.
- Discuss which clubs, after school clubs we are a part of i.e. gym/ rugby/ football etc.
- Listen, learn and sing traditional Welsh Nursery Rhymes.
- Recognise key buildings and places in our community e.g. school, house, shops, post box, library etc.
- Plant flowers in our outdoor area
- Discuss features of different seasons.

Community

Who and what is important to us?

Mathematics and Numeracy



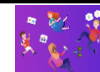
- Learn, name and recognise the days of the week and the seasons.
- Differentiate and classify big and small objects.
- Correspond numbers/ digits to Numicon / multi-links/ stones etc.
- Order objects and numbers from smallest to biggest.
- Learn how to measure capacity e.g., full, empty, etc.

Expressive Arts



- Create self-portraits.
- Create paintings, drawings and artworks of our families / important people and places.
- Create different buildings and structures through junk modelling e.g. signposts / bandstand / trees / post box / bus station etc.
- Create a charm bracelet with buttons and gems which represents a person/ place of importance to us.

Health and Well-being



- Walk around the school to compare different rooms, e.g. the hall, the library, the canteen etc.
- Forest School sessions.
- Practise and develop the gross/fine motor skills and hand-eye coordination.
- Develop body movements by following 'Symud gyda Tedi'.
- Compete in the School Sports Day.
- Recognise and discuss safe / dangerous behaviour mentioned in 'Goldilocks and the Three Bears' as well as understanding how to care for plants / bugs and animals.