

Prosbectws



Ysgol Gymraeg
Castell-nedd

Caredigrwydd.
Cymreictod.
Cymuned.



PIC•COLLAGE

2025 - 2026

Rhagair /Foreword

Ein nod yw rhoi cyfle i bob plentyn lwyddo



Caredigrwydd.

Cymreictod.

Cymuned.

Rhagair

Mae'n bleser gan y Llywodraethwyr, y Pennaeth a'r Staff gyflwyno'r prospectws yma i rieni a darpar rieni. Ynddo ceir gwybodaeth sylfaenol am yr ysgol. Ni fydd mewn unrhyw ffordd yn cymryd lle'r berthynas bersonol ac uniongyrchol honno rhwng ysgol a rhieni, ond mae'n fodd i gadarnhau hynny a bod yn sylfaen i adeiladu arni.

Anelwn at fod yn ysgol ragorol ac at wneud penderfyniadau er lles y plant. Mae dewis yr ysgol orau i'ch plentyn yn benderfyniad allweddol ac mae dewis anfon eich plentyn i ysgol gynradd cyfrwng Cymraeg yn ddewis pwysig. Mae nifer o fanteision i allu siarad dwy iaith a mwynhau dau ddiwylliant a thrwy ddewis addysg Gymraeg dyna a gânt.

Mae athrawon a chynorthwyr yn cydweithio'n effeithiol i ddarparu amgylchedd dysgu cynhwysol a chynhaliol i ddisgyblion. Mae eu hadnabyddiaeth o'r disgyblion yn dda ac maent yn datblygu perthynas waith ofalgar a diogel wrth iddynt eu cefnogn i ddysgu.

ESTYN 2024

Foreword

It is a pleasure for the Governors, the Head and the Staff to present this prospectus to parents and prospective parents. It contains basic information about the school. It will in no way replace that personal and direct relationship between school and parents, but it is a means of confirming that and being a foundation to build on.

We aim to be an excellent school and to make decisions for the benefit of the children. Choosing the best school for your child is a key decision and choosing to send your child to a Welsh medium primary school is an important choice.

There are many advantages to being able to speak two languages and enjoy two cultures and by choosing Welsh education that is what they get.

Teachers and assistants work together effectively to provide an inclusive and supportive learning environment for pupils. They know the pupils well and develop a caring and safe working relationship as they support them to learn.

ESTYN 2024

Caredigrwydd. Cymreictod. Cymuned.

Ein nod yw rhoi cyfle i bob plentyn lwyddo.

Ein nod fel ysgol a chymuned yw sicrhau cyfleoedd gwerthfawr i gefnogi ac ysgogi ein plant ar hyd eu llwybr addysgol. Gwneir hynny wrth i ni sicrhau awyrgylch gofalgar a chynhwysol sy'n gwerthfawrogi a chydabod ymdrech bob plentyn.

Trwy wersi perthnasol, ymweliadau a phrofiadau priodol; cwricwlwm creadigol, ysgogol; rhaglen gofal a chefnogi pwrpasol, datblygir y sgiliau a'r gwerthoedd fydd yn sylfaen i'n plant yn eu bywydau tu hwnt i addysg.

Trwy gydweithio'n agos gyda'r gymuned a chreu cysylltiadau newydd, anogir hyder ac annibyniaeth, gan fagu balchder at eu milltir sgwâr a Chymru.

Mae Ysgol Castell-nedd yn Ysgol Gynradd Gymraeg ac felly mae datblygu balchder at ein hiaith, ein traddodiadau a'n etifeddiaeth yn flaenllaw ym mywyd pob dydd yr ysgol.

Mae gan holl randdeiliaid yr ysgol disgwyliaid uchel ac felly mae cydweithio, rhannu gwybodaeth a syniadau yn allweddol i lwyddiant yr ysgol.

Wrth wraidd popeth a wnawn bydd y pedwar diben:

- dysgwyr uchgelgeisiol, galluog sy'n barod i ddysgu gydol eu bywydau
- cyfranwyr mentrus, creadigol sy'n barod i chwarae rhan lawn mewn bywyd a gwaith
- dinasyddion egwyddorol, gwybodus yng Nghymru a'r byd
- unigolion iach, hyderus sy'n barod i fyw bywyd cyflawn fel aelodau gwerthfawr o gymdeithas

Ein nod fel ysgol a chymuned yw sicrhau ein bod yn darparu cyfleoedd gwerthfawr i gefnogi ac ysbrydoli ein plant i lwyddo. O'r herwydd rydym yn darparu amgylchedd gofalgar a chynhwysol sy'n gwerthfawrogi ymdrech y disgyblion unigol i wneud eu gorau.

Mae'r rhan fwyaf o ddisgyblion yn ymddwyn yn aeddfed tuag at eraill ac yn dangos dealltwriaeth gadarn o werthoedd yr ysgol, sef 'Cymreictod, Cymuned a Charedigrwydd. ESTYN 2024



Kindness. Welsh Identity. Community.

Our aim is to give every child an opportunity to succeed.

Our aim as a school and community is to ensure that we provide valuable opportunities to support and inspire our children to succeed. As such we provide a caring and inclusive environment that values the individual pupils effort to do their best.

We ensure that we provide opportunities and purposeful lessons that are appropriate to the children's needs and interests- a broad and balanced curriculum that encourages creativity. We provide a purposeful programme of support and nurture.

By working closely with the community and forging new connections, confidence and independence are encouraged, and pride in their local area and Wales.

Ysgol Castell-nedd is a Welsh medium primary school and as such the traditions and heritage of the language are integral to our ethos and philosophy.

All stakeholders in the school have high expectations and so working together, sharing information and ideas is key to the success of the school. Working together for the benefit of the children is integral to the schools success.

At the heart of everything we do will be the four purposes:

- ambitious, capable learners who are ready to learn throughout their lives
- enterprising, creative contributors who are ready to play a full part in life and work
- ethical, informed citizens who are ready to be citizens of Wales and the world
- healthy, confident individuals who are ready to lead fulfilling lives as valued members of society

Our aim as a school and community is to ensure that we provide valuable opportunities to support and inspire our children to succeed. As such we provide a caring and inclusive environment that values the individual pupils effort to do their best.

Most pupils behave maturely towards others and show a sound understanding of the school's values, namely 'Welshness, Community and Kindness. ESTYN 2024



Amcanion / Aims

Ein nod yw rhoi cyfle i bob plentyn lwyddo



Caredigrwydd.

Cymreictod.

Cymuned.

Amcanion

- Sicrhau llwyddiant i'r unigolyn o fewn y broses addysgol.
- Sicrhau addysg effeithiol i bob unigolyn a bod y plentyn hwnnw yn ganolog i'r dysgu a chyfraniad pob unigolyn yn cael ei barchu.
- Sicrhau bod pob plentyn yn cael cyfle i ddatblygu yn emosiynol, yn gymdeithasol, yn foesol ac yn addysgol hyd eithaf ei allu.
- Sicrhau awyrgylch hapus a chartrefol a bod yr ethos yma yn hybu'r iaith a diwylliant Cymraeg a Chymreig, a bod amgylchedd yr ysgol yn adlewyrchu parch drwy safonau uchel o arddangos a gofal.
- Meithrin cysylltiadau â'r gymuned leol, a dechrau paratoi plant i fod yn oedolion cyfrifol yn eu cymunedau.
- Anelwn at ddatblygu rhinweddau personol megis dyfalbarhad, diwydrwydd, hunan fynegiant, gwasanaeth, teyrngarwch, gonestrwydd a hunan hyder ac i annog hunan barch a pharch at eraill.
- Anogwn bob plentyn i chwarae rôl flaenllaw a gweithredol ym mywyd yr ysgol

Aims

- Ensuring success for the individual within the educational process.
- Ensuring effective education for each individual and that the child is central to the learning and each individual's contribution is respected.
- Ensuring that every child has the opportunity to develop emotionally, socially, morally and educationally to the best of their ability.
- Ensuring a happy and homely atmosphere and that this ethos promotes the Welsh and Welsh language and culture, and that the school environment reflects respect through high standards of display and care.
- Foster links with the local community, and start preparing children to be responsible adults in their communities.
- We aim to develop personal qualities such as perseverance, diligence, self-expression, service, loyalty, honesty and self-confidence and to encourage self-respect and respect for others.
- We encourage all children to play a leading and active role in the life of the school.

Manylion / Details

Ein nod yw rhoi cyfle i bob plentyn lwyddo



Caredigrwydd.

Cymreictod.

Cymuned.

Cyfeiriad
Address

Heol Woodland, Castell-nedd, SA11
3AL

Rhif ffôn
Phone number

01639 637701

E-bost
Email

yggcastellnedd@npted.org

Oed y disgyblion
Age of pupils

3-11

Nifer ar y Gofrestr (Medi 2025)
Number on register (September 2025)

400 (46 ohonynt yn rhan amser –
Meithrin / 46 part time Nursery)

Cadeirydd y Llywodraethwyr
Chair of Governors

Mrs. Ff Green

Pennaeth
Head Teacher

Mrs Lois Loader, B.Add. CPCP



Categori ieithyddol yr Ysgol / School's language Category

Cymraeg yw iaith swyddogol yr ysgol.

Addysgir plant y Meithrin a'r Cyfnod Sylfaen yn gyfangwbl trwy gyfrwng y Gymraeg. Unwaith mae'r plant yn cyrraedd blwyddyn 3 fe'i dysgir trwy gyfrwng y Gymraeg a'r Saesneg, ond rhoddir mwy o bwyslais ar y Gymraeg fel cyfrwng dysgu.

Amcan sylfaenol yr ysgol yw darparu addysg ddwyieithog i ddisgyblion fydd yn eu galluogi i ennill hyfedredd yn y Gymraeg a'r Saesneg. Anelwn at feithrin, yn y plant, ymwybyddiaeth o Gymreictod a chariad at wlad ac iaith.



Welsh is the official language of the school.

Nursery and Foundation Phase children are taught entirely through the medium of Welsh. Once the children reach year 3, it is taught through the medium of Welsh and English, but more emphasis is placed on Welsh as a medium of learning.

The school's basic objective is to provide bilingual education to pupils which will enable them to gain proficiency in Welsh and English. We aim to foster, in the children, an awareness of Welsh identity and a love for country and language.

Oriau Ysgol / School Hours

Meithrin A	8:40 – 10:40
Meithrin B	11:00 – 13:00
Meithrin C	13:30 – 15:30
Derbyn a blwyddyn 1	8:40 – 15:00
Blwyddyn 2	8:45 – 15:05
Blwyddyn 3	8:45 – 15:15
Blwyddyn 4, 5 a 6	8:45 – 15:20

Clwb brecwast / Breakfast Club

8:10 – 8:40 (yn ddyddiol / daily)

Mynediad olaf / last entrance: 8:15

Cyrraedd yr ysgol yn y bore

Yn y boreau, er mwyn hwyluso'r broses o'r plant yn cyrraedd yr ysgol yn ddiogel, gweler y drefn ar gyfer cael mynediad i'r ysgol.

Dosbarth Meithrin i ddod drwy brif glwyd yr ysgol gyda'i rhiant / gwarchodwr ac at fuarth y Meithrin

Blynyddoedd Derbyn i 6 i ddefnyddio prif glwyd yr Ysgol ac i fynd yn syth i'w dosbarthiadau.

Fe fydd clwydi'r Ysgol yn cau am 8:50 bob bore.

Rydym yn dra ddiolchgar am eich cydweithrediad wrth sicrhau mynediad diogel i holl blant yr ysgol yn y boreau.

Absenoldeb / Prynoldeb

Gobeithir y bydd cyfrifoldeb rhieni yn sicrhau prydoldeb eu plant yn yr ysgol. Rhaid hysbysu'r ysgol pan fod disgybl yn absennol. Heb yr eglurhad hwn, cofnodir absenoldeb heb ganiatâd wrth enw'r disgybl. Rhaid hysbysu'r ysgol os oes bwriad mynd â phlant ar wyliau, a bydd angen cwblhau ffurflen wyliau o flaen llaw.

Presenoldeb yn ystod un flwyddyn ysgol	Nifer y diwrnodau o absenoldeb cyfwerth	Tua nifer yr wythnosau o absenoldeb
95%	9 niwrnod	2 wythnos
90%	19 niwrnod	4 wythnos
85%	29 niwrnod	6 wythnos
80%	38 niwrnod	8 wythnos

Arriving in the morning

In the mornings, in order to facilitate the process of the children arriving at school safely, see the procedure for gaining access to the school.

Nursery Class to come through the school's main gate with their parent/guardian and to the Nursery yard.

Reception to years 6 to use the School's main gate and go straight to their classes.

The School gates will close at 8:50 each morning.

We are very grateful for your cooperation in ensuring safe access for all the children in the mornings.

Absence / Punctuality

It is hoped that parents' responsibility will ensure their children's punctuality at school. The school must be notified when a pupil is absent. Without this explanation, an absence without permission will be recorded against the pupil's name. The school must be notified if it is intended to take children on holiday, and a holiday form will need to be completed in advance.

Attendance during one school year	Equals number of days absent	Which is approximately this many weeks absent
95%	9 days	2 weeks
90%	19 days	4 weeks
85%	29 days	6 weeks
80%	38 days	8 weeks

Staff dysgu / Teaching Staff

Meithrin	Mrs C.Rees Morgan
Derbyn / Blwyddyn1	Miss S Rees
Derbyn / Blwyddyn 1	Mrs C Phillips
Derbyn / Blwyddyn 1	Mr S Griffiths
Blwyddyn 2	Mrs J Cox
Blwyddyn 2	Miss N Rees
Blwyddyn 3	Mr C Hinton
Blwyddyn 3	Miss C Thomas
Blwyddyn 4	Miss A Harris
Blwyddyn 4	Mrs S Asher
Blwyddyn 5	Mrs S Stephens
Blwyddyn 5	Mr A Davies
Blwyddyn 6	Mr C Richards
Blwyddyn 6	Mrs B Overd
Maeth a CPA	Miss H Griffiths

Cymorthyddion Addysgu / Teaching Assistants

Miss H Griffiths
Mrs H Payne
Mrs M Kingdom
Mrs Rh Williams
Mrs B Griffiths
Miss C Blank
Mrs J Canfield
Miss S Hunt
Miss L Evans
Miss E Rouse
Miss S Jones
Mrs Rh Leyshon
Miss C Jones
Miss C Williams
Miss E Sleep
Miss Ll Scott
Miss M Smith



Pennaeth / He

Mrs L Loc

Dirprwy Bennaeth / Deputy Head

Mr S Elis

Cydlynnydd Anghenion Dysgu Ychwanegol / Additional Learning Needs Coordinator

Mr S Elis

Bwrsar / Bursar

Mrs G Smith

Staff Teithiol / Peripatetic Staff

Miss L Davies

Chwythbrennau

Miss K Baylis

Telyn

Mrs J Thomas

Pres

Mrs S Williams

Ffidil

Mr S Evans

Gitâr



Swyddogion Gweinyddol/ Administrative Officers

Mrs. D. Rees

Miss. S. Law

Staff y Gegin / Kitchen Staff

Mrs. J Phillips

Mrs. O Richards

Sian Quick

Stacey Lindsey

Nicola Davies

Glanhawyr / Cleaners

Mr. M. Pugh

Mrs. Helen Stuart

Mrs. Claire Hunt

Gofalwr / Caretakers

Mr. M. Pugh

Patrol Diogelwch Ffyrdd / Road Safety Patrol

Mr. M. Seymour



Gofal bugeiliol

Ein nod yw rhoi cyfle i bob plentyn lwyddo



Caredigrwydd.

Cymreictod.

Cymuned.

Gofal Bugeiliol

Mae ein gofal bugeiliol yn eithriadol, gan sicrhau bod pob plentyn yn cael ei gadw'n ddiogel ac yn cael ei gefnogi y tu fewn a thu allan i'r ysgol. Mae lles disgyblion yn bwysig iawn i ni.

Mae pob athro/athrawes yn gyfrifol am y plant yn eu dosbarthiadau, a'r Pennaeth â chyfrifoldeb dros y cyfan. Ceisiwn greu amgylchedd diogel tu fewn a thu allan i'r ysgol, ac rydym bob amser yn ymwybodol o faterion iechyd a diogelwch. Rydym yn mabwysiadu agwedd ofalgar a chydymdeimladol tuag at anghenion pob plentyn o fewn awyrgylch gynnes a chartrefol.

Os yw plentyn yn sâl neu os caiff ddamwain, bydd yr ysgol yn ceisio cysylltu â'r rhieni trwy ddefnyddio'r wybodaeth a dderbynnir oddi wrth rieni ar y ffurflen gyswllt. Os ydy'r rhieni yn newid eu rhif ffôn, cyfeiriad cartref neu cydfeiriad ebost yn ystod y flwyddyn, dylid sicrhau eu bod yn rhoi gwybod i staff y swyddfa er mwyn diweddarau'r wybodaeth cyswllt o fewn y system.

Os fydd rhiant yn gwneud cais i aelod o'r staff i roi moddion i ddisgyblion, fe fydd yr ysgol yn gweithredu yn ôl y canllawiau a amlinellir yn ein Polisi Gweinyddu Moddion. Pan fydd angen moddion cynorthwyol (e.e. pwmp asthma) gall y plant gymryd rhain yn ôl yr angen a'u cadw'n ddiogel. Os oes ansicrwydd ynglŷn â moddion yn yr ysgol, gellir trafod gyda'r Pennaeth.

Caiff plant eu goruchwyllo yn ystod yr awr ginio ac amseroedd chwarae.

Cynhelir dril tân yn rheolaidd.

Archwilir yr offer Ymarfer Corff a cheir goruchwyliaeth gyfrifol yn ystod y gwersi hyn.

O bryd i'w gilydd bydd swyddogion meddygol a deintyddol yr Awdurdod Iechyd yn ymweld â'r ysgol. Caiff rieni'r wybodaeth angenrheidiol cyn yr ymweliadau hyn, a chysylltir â hwy os cwyd unrhyw broblemau yn eu sgil.

Gwna'r ysgol ddefnydd hefyd o wasanaethau eraill yn yr Awdurdod, megis y Gwasanaeth Seicolegol a'r Gwasanaeth Lles.

Plant a ofelir amdanynt

Mae'r ysgol yn cefnogi ac yn hyrwyddo cyraeddiadau addysgiadol plant a ofelir amdanynt. Y Pennaeth Gweithredol, Mrs. Loader yw'r aelod o staff sydd â chyfrifoldeb penodol dros blant y gofelir amdanynt.

Mae'r ysgol yn gymuned ofalgar, cynhwysol a hapus sy'n cefnogi anghenion emosiynol, a chymdeithasol bron bob disgybl yn hynod effeithiol. Mae gan y pennaeth a'r staff addysgu adnabyddiaeth dda o bob plentyn ac maent yn anelu'n angerddol at ddiwallu eu hanghenion lles unigol. ESTYN 2024

Pastoral Support

Ein nod yw rhoi cyfle i bob plentyn lwyddo



Caredigrwydd.

Cymreictod.

Cymuned.

Our pastoral care is exceptional, ensuring that every child is kept safe and supported inside and outside the school. The welfare of pupils is very important to us.

Every class teacher is responsible for the children in his/her class with the Headteacher having overall responsibility. We aim to create a safe environment in and around the school, and are always mindful of health and safety issues. We adopt a caring, compassionate attitude towards the general well-being of each pupil.

If a child is ill or has an accident, the school does its utmost to contact parents by using the information given by parents on the registration form. If a parent changes his/her phone number, address or email address during the course of the year, it is essential that they inform the office staff in order for the school to update the information kept on the school system.

If any parent requests that a member of staff administers medicine to a pupil, the school will respond in accordance with our Administration of Medicine Policy. When pupils require support medicines (e.g. asthma pumps), pupils can take these as and when required and keep them in a safe place. Any uncertainty regarding medicines at school should be discussed with the Headteacher.

Children are supervised during lunch and play breaks.

A fire drill exercise is held regularly.

Inspection of P.E. equipment is undertaken and there is responsible supervision during these lessons

Medical and dental personnel from the Health Authority visit the school at regular intervals. Parents are given the necessary information regarding these visits and will be contacted if any problems arise.

Close links exist with the Schools' Psychological Service and the Education Welfare Service.

Children who are looked after

The school wholeheartedly supports and promotes the educational achievements of children who are looked after. The Acting Headteacher, Mrs Loader is the member of staff designated as having responsibility for children who are looked after.

The school is a caring, inclusive and happy community that supports the emotional and social needs of nearly all pupils very effectively. The headteacher and teaching staff know all of the children very well and aim passionately to meet their individual well-being needs. ESTYN 2024

Diogelwch / Safety

Ein nod yw rhoi cyfle i bob plentyn lwyddo



Caredigrwydd.

Cymreictod.

Cymuned.

Nod yr ysgol yw darparu amodau iach a diogel i bawb sy'n dysgu a gweithio ynddi ac i roi gwybodaeth, hyfforddiant a goruchwyliaeth fel y bo'r galw i sicrhau hyn.

Yn y pen draw, yr A.A.Ll. sydd â'r cyfrifoldeb dros lechyd a Diogelwch yn yr ysgol. Mae cyfrifoldebau pawb - yr A.A.Ll., y Llywodraethwyr a'r ysgol i'w gweld ym Mholisi lechyd a Diogelwch yr A.A.Ll. Fel rhan o bolisi'r ysgol, mae mesurau diogelwch mewn grym i reoli mynediad i adeiladau'r ysgol. Rheolir mynediad drwy'r dderbynfa ar waelod y lon. Dylai pob ymwelydd â'r ysgol fynd i'r dderbynfa i gael mynediad.

Mae'r ysgol yn agor am 8.40 y bore. Hyd yr amser yma, does dim goruchwyliaeth i ddisgyblion, heblaw y disgyblion hynny sy'n mynychu'r Clwb Brecwast.

The aim of the school is to provide healthy and safe conditions for all pupils and employees and to give information, training and supervision, as needed, to ensure this.

The ultimate responsibility for Health and Safety in the school rests with the L.E.A. The roles and responsibilities of all parties – L.E.A., Governors and School – are set out in the L.E.A. Health and Safety Policy. As part of the school's policy, safety measures are in force to control entry to all school buildings. All visitors to the school should report to the school office and entry will be ratified here.

The school opens at 8.40 a.m. Until this time, there is no supervision of pupils, with the exception of pupils who attend Breakfast Club.



Cyfleusterau tai bach / Toilet Facilities

Lleolir 23 ciwbicl tŷ bach a 3 troethle ar draws pedair adeilad yr ysgol, yn cynnwys 4 sydd â mynediad a chyfleusterau i'r anabl. Mae'r cyfleusterau yn addas ar gyfer oed y plant sy'n eu defnyddio. Ceir 2 dŷ bach ychwanegol at ddefnydd staff ac ymwelwyr yn unig. Glanheir y tai bach yn ddyddiol.

23 toilet cubicles and 3 urinals are located across the four areas of the school building, including 4 that have access and facilities for the disabled. The facilities are suitable for the age of the children who use them. There are 2 additional toilets for the use of staff and visitors only. The toilets are cleaned daily.

Disgyblaeth

Ein dymuniad yn Ysgol Gymraeg Castell-nedd yw cynnal hinsawdd sy'n hybu agwedd gadarnhaol tuag at ymddygiad a disgyblaeth. Ein bwriad yw datblygu ymwybyddiaeth o hunanddisgyblaeth, cyfrifoldeb a pharch y naill at y llall yn ein disgyblion. Gwobrwyir gwaith da ac ymddygiad da drwy roi sticeri, tystysgrifau ac Amser Aur.

Nid ydym yn credu mewn gweiddi na chodi llais ar blant gan mai creu awyrgylch hapus a diogel yw ein nod a gosod esiampyl dda. Defnyddiwn amrywiaeth o strategaethau i dynnu sylw'r disgyblion a theimlwn yn gryf bod modd datrys unrhyw anghydfod, allai godi, trwy drafod yn gall gyda'n gilydd trwy ddefnyddio dulliau Arfer Adferol. Ceisiwn ganmol a gwobrwyo yn hytrach na thynnu sylw at ymddygiad gwael. Pan fydd rhywun yn torri'r rheolau hyn, defnyddir sanctsiynau priodol a bwriadus fel cael amser i feddwl, colli breintiau, ymddiheuriadau ysgrifenedig a sgwrs gyda'r Pennaeth yn y pendraw.

Trafodir problemau disgyblaeth difrifol â rhieni yn gynnar a phwysleisir y bartneriaeth hon. Mae gan Ysgol Castell-nedd gytundeb ysgol/cartref sydd i'w gytuno a'i lofnodi gan y plant, y rhieni a'r staff.

Mae staff yn rhoi pwyslais cyson ar hybu ymddygiad cadarnhaol disgyblion. Caiff hyn ei amlygu yn ymddygiad cadarnhaol bron bob disgybl. ESTYN 2024
Discipline

At Ysgol Gymraeg Castell-nedd, we wish to maintain a climate that promotes a positive approach to behaviour and discipline. We aim to develop in pupils a sense of self-discipline, responsibility and mutual respect. Stickers and certificates are awarded for good work or behaviour and Amser Aur / Golden Time is awarded.

We feel strongly that shouting is unnecessary, as it is our aim to create a happy and safe environment and set a good example. We use a variety of different strategies, which enables us to solve any disputes or issues without the need to raise voices. We praise the children and use positive feedback as opposed to drawing attention to negative behavior. Appropriate and considered sanctions such as having time to think, written apologies and ultimately a conversation with the Headteacher.

Major questions of discipline are shared with parents at an early stage, and this partnership is emphasised. Home/school contracts are to be signed by staff, pupil and parents.

Staff place a consistent emphasis on promoting pupils' positive behaviour. This is highlighted in the positive behaviour of nearly all pupils. ESTYN 2024

Cyflwyniad

Mae Cwricwlwm i Gymru wedi bod yn statudol ers Medi 2022 ac mae hwn, felly, yn gyfnod cyrffrous i'n dysgwyr yn Ysgol Gynradd Gymraeg Castell-nedd.

Cynlluniwyd y cwricwlwm yng Nghymru, i Gymry, a'i gyflwyno er mwyn roi'r sylfaen i ddisgyblion sydd ei angen arnynt i lwyddo mewn byd sydd yn newid o'u cwmpas.

Y Pedwar Diben

Er mwyn cyflawni'r nod hollbwysig yma, mae'r Cwricwlwm wedi ei wreiddio yn gyfan gwbl yn y Pedwar Diben, ac ein blaenoriaeth ni yn Ysgol Castell-nedd, felly, yw i gefnogi ein dysgwyr ni ddatbygu i fod yn:

**Uchelgeisiol,
galluog**

**Egwyddorol,
wybodus**



**Iach,
hyderus**

**Mentrus,
creadigol**

Mae'r Cyngor Ysgol wrthi'n dylunio ac ysgrifennu stori am 'Dani'r Ddraig', masgot y 4 diben, gyda chymorth dylunydd graffeg ac awdur lleol gyda'r bwriad o godi ymwybyddiaeth o'r Pedwar Diben o fewn ein cymuned ddysgu.

Y 6 Maes Dysgu a Phrofiad

Trwy ddefnyddio dull addysgu a dysgu sy'n seiliedig ar gysyniadau, mae strwythur ein cwricwlwm yn cynnwys y chwe Maes Dysgu a Phrofiad:



**Celfyddydau
Mynegiannol**



Iechyd a Lles



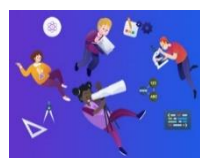
Y Dyniaethau



**Ieithoedd,
Llythrennedd a
Chyfathrebu**



**Mathemateg
a Rhifedd**



**Gwyddoniaeth a
Thechnoleg**

Introduction

A Curriculum for Wales has been statutory since September 2022 and this is, therefore, an exciting period for our learners at Ysgol Gynradd Gymraeg Castell-nedd.

The curriculum was designed in Wales, for Welsh people, and presented in order to give pupils the foundation they need to succeed in a world that is changing around them.

The Four Purposes

In order to achieve this crucial aim, the Curriculum is completely rooted in the Four Purposes, and our priority at Ysgol Gynradd Gymraeg Castell-nedd, therefore, is to support our learners to develop to be:

**Ambitious,
capable**

**Ethical,
informed**



**Healthy,
confident**

**Enterprising,
creative**

The School Council are in the process of designing and writing a story about 'Dani'r Ddraig', with the help of a graphic designer and a local author, with the intention of raising awareness of the Four Purposes within our learning community.

The 6 Areas of Learning and Experience

Using a concept-based teaching and learning approach, the structure of our curriculum includes six Learning and Experience



**Expressive
Arts**



**Health and
Wellbeing**



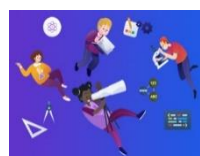
Humanities



**Languages,
Literacy and
Communication**



**Mathematics
and
Numeracy**



**Science and
Technology**

Sgiliau

Yn Ysgol Castell-nedd, rydym hefyd yn ymwybodol nad oes modd datblygu'r Pedwar Diben heb ddatblygu sgiliau ein dysgwyr hefyd sef: **Creadigrwydd ac arloesi, Meddwl yn feirniadol a datrys problemau, Effeithiolrwydd personol, a Cynllunio a threfnu.**

Yn unol a hyn, mae sgiliau **Llythrennedd, Rhifedd a Chymwysedd Digidol** yn cael eu haddysgu ar draws bob Maes Dysgu a Phrofiad.

Er ein bod yn cydnabod fod dysgu gwybodaeth yn bwysig yma yn Ysgol Castell-nedd, rydym yn cydnabod, hefyd, fod dysgu sgiliau yn flaenoriaeth, gan mai sgiliau fydd yn arfogi ein plant ar gyfer bywyd tu hwnt i'w cyfnod yma yn yr ysgol.

Gwelwn, hefyd, sut mae Cwricwlwm Cymru hefyd yn pwysleisio pwysigrwydd 'cynefin'. Dyma pam mae ardal Castell-nedd, ac ardaloedd ehangach, yn derbyn sylw sylweddol o fewn ein cwricwlwm ni.

Trwy gydweithio'n agos gyda'r gymuned a chreu cysylltiadau newydd, anogir hyder ac annibyniaeth, ac yn hollbwysig, balchder tuag at eu milltir sgwâr a Chymru.



Skills

At YGG Castell-nedd, we are also aware that it is not possible to develop the Four Purposes without also developing the skills of our learners namely: Creativity and innovation, Critical thinking and problem solving, Personal effectiveness, and Planning and organisation. In line with this, Literacy, Numeracy and Digital Competence skills are taught across all Areas of Learning and Experience.

Although we recognise that learning information is important here at YGG Castell-nedd, we also recognise that learning skills is a priority, as it is skills that will equip our children for life beyond their time here at school .

We also see how the Welsh Curriculum also emphasises the importance of 'cynefin'. This is why the Neath area, and wider areas, receive significant attention within our curriculum.

By working closely with the community and creating new connections, confidence and independence are encouraged, and crucially, our pride towards their square mile and Wales.



Y Côt Addysg Cyd-berthnasedd a Rhywioldeb

Yn unol â'r gyfraeth rydyn ni'n darparu gwersi cyd-berthnasedd a rhywioldeb yn ol oedran a datblygiad yr unigolyn.

Rydym yn defnyddio'r 'Côt Addysg Cydberthynas a Rhywioldeb' er mwyn cynllunio ar gyfer yr addysg cydberthynas a rhywioldeb yr ydym yn darparu ar gyfer ein plant.

<https://hwb.gov.wales/cwricwlwm-i-gymru/crynodeb-o-r-ddeddfwriaeth/>

Mae'r cynnwys yn seiliedig ar linyddau dysgu cysylltiedig bras, sef:

- cydberthnasau a hunaniaeth
- iechyd rhywiol a lles
- grymuso, diogelwch a pharch.

Mae Addysg Rhyw a Pherthnasedd yn statudol. Does dim rhyfedd yn sgil yr heriau y mae pobol ifanc yn gallu gwynebu, ac rydym yn ymwybodol o'r cyfrifoldeb sydd gennym i ddarparu'r Addysg Rhyw a Pherthnasedd orau posibl i blant Ysgol Castell-nedd tra ei bod nhw o dan ein gofal.

<https://hwb.gov.wales/cwricwlwm-i-gymru/cynllunio-eich-cwricwlwm/themau-trawsgwricwlaidd-ar-gyfer-cynllunio-eich-cwricwlwm/>

Crefydd, Gwerthoedd a Moeseg

Mae 'Crefydd, Gwerthoedd a Moeseg' yn un o ofynion statudol arall Cwricwlwm i Gymru, gan ei fod hefyd yn gwneud cyfraniad sylweddol tuag at gyflawni'r 4 Diben i'n dysgwyr trwy Maes Dysgu a Phrofiad Y Dyniaethau.

Er mwyn helpu i sicrhau ehangder a dyfnder digonol, rhennir 'Crefydd, Gwerthoedd a Moeseg' i gyfadranau sydd oll yn gysylltiedig:

- Chwilio am ystyr a phwrpas
- Y byd naturiol a phethau byw
- Hunaniaeth a pherthyn
- Awdurdod a dylanwad
- Cydberthnasau a chyfrifoldeb
- Gwerthoedd a moeseg
- Taith bywyd

Yn Ysgol Castell-nedd, ymdrechwn i ddarparu'r addysg hollbwysig hon drwy gymysgedd o brofiadau gwahanol gan gynnwys: profiadau ar lawr y dosbarth, ymweliadau i'n hardal leol, ymweliadau gan bobol o'n cymuned.

<https://hwb.gov.wales/cwricwlwm-i-gymru/crynodeb-o-r-ddeddfwriaeth/#crefydd.-gwerthoedd-a-moeseg>

Addoli ar y cyd

Yn unol â'r ddeddf addysg rydym fel ysgol yn darparu cyfleoedd addoliad mewn amryw ffurf. Mae hawl gan rhiant i eithrio'i plentyn o'r addoliad.

The Relationship and Sex Education Code

In accordance with the literature we provide lessons of mutuality and sexuality according to the age and development of the individual.

We use the 'Relationship and Sexuality Education Code' in order to plan for the relationship and sexuality education we provide for our children. <https://hwb.gov.wales/cwricwlwm-i-gymru/crynodeb-o-r-ddeddfwriaeth/>

The content is based on broadly related strands of learning, namely:

relationships and identity

sexual health and well-being

empowerment, safety and respect.

Sex and Relationship Education is statutory. It is no wonder the challenges that young people can face, and we are aware of the responsibility we have to provide the best possible Sex and Relationship Education to the children of Ysgol Neath while they are under our care.

<https://hwb.gov.wales/cwricwlwm-i-gymru/cynllunio-eich-cwricwlwm/themau-trawsgwricwlaidd-ar-gyfer-cynllunio-eich-cwricwlwm/>

Religion, Values and Ethics

'Religion, Values and Ethics' is another statutory requirement of Curriculum for Wales, as it also makes a significant contribution towards achieving the 4 Purposes for our learners through the Humanities Learning Area and EXPERIENCE.

To help ensure sufficient breadth and depth, 'Religion, Values and Ethics' is divided into faculties which are all linked:

- Searching for meaning and purpose
- The natural world and living things
- Identity and belonging
- Authority and influence
- Relationships and responsibility
- Values and ethics
- Life's journey

At Neath School, we strive to provide this vital education through a mix of different experiences including: experiences on the classroom floor, visits to our local area, visits from people from our community. <https://hwb.gov.wales/cwricwlwm-i-gymru/crynodeb-o-r-ddeddfwriaeth/#crefydd-gwerthoedd-a-moeseg>

Joint Worship

In accordance with the education act we as a school provide worship opportunities in various forms. Parents have the right to exclude their child from worship.

Addysg bersonol a chymdeithasol

Mae'r rhan yma o'r cwricwlwm yn hyrwyddo datblygiad personol a chymdeithasol y disgyblion. I gefnogi'r agwedd yma, defnyddia'r ysgol fewnbwn o asiantaethau eraill. Bydd rhaglen gan y nyrs ysgol yn hybu agweddau o ABCh. Mae'r ysgol yn cymryd rhan yn Rhaglen Addysg Graidd Cymru Gyfan sydd wedi'i threfnu gan yr heddlu. Fel rhan o'r rhaglen hon fe ddaw heddwas cyswllt yr ysgol i ymweld yn rheolaidd i roi gwersi ar agweddau o'r fframwaith ABCh. Mae gan yr ysgol hefyd Gyngor Ysgol o ddisgyblion a staff a'i ddiben yw galluogi disgyblion i drafod materion sy'n ymwneud â'u hysgol, eu haddysg ac unrhyw fater arall y maent yn ymboeni amdano. Caiff y sylwadau eu trosglwyddo i'r pennaeth, ac os yn berthnasol, i'r Corff Llywodraethu.



Personal and social education

This part of the curriculum promotes the pupils' personal and social development. To support this aspect, the school uses input from other agencies. A program by the school nurse will promote aspects of PSE. The school takes part in the All Wales Core Education Program organised by the police. As part of this programme, the school's liaison police officer will visit regularly to give lessons on aspects of the PSE framework. The school also has a School Council made up of pupils and staff whose purpose is to enable pupils to discuss issues relating to their school, their education and any other issue they are worried about. The comments are passed on to the headteacher, and if relevant, to the Governing Body.

Chwaraeon ac Addysg Gorfforol

Yn gyffredinol, prif nodau dysgu Addysg Gorfforol yw annog a helpu pob plentyn i fyw bywyd iachus a bywiog, ac i hyrwyddo datblygiad priodweddau dymunol megis ymdrech, chwarae teg, cyd-chwarae, dyfalbarhad, gorchest a hunan hyder.

Ceisio'r staff gyflawni'r nodau yma trwy gynnig amrediad eang o weithgareddau i blant o bob oedran, tu fewn a thu allan i'r cwricwlwm ffurfiol, gan eu herio i ddatblygu a gwella'u perfformiadau unigol. Mae'r gweithgareddau yma'n cynnwys Gymnasteg, Dawns, Nofio, Athletau, Gweithgareddau Awyr Agored ac Antur, a Gêmau.

Defnyddir cyfleusterau cymunedol yn cynnwys cae chwarae Clwb Rygbi'r Gnoll, Y Cyrtiau Tennis a phwll nofio'r dref ynghyd ag iard yr ysgol i sicrhau ystod eang o gyfleoedd i'r disgyblion ymarfer.

Caiff y plant eu dysgu gan athrawon yr ysgol ac fe fanteisir ar bob cyfle i gael arbenigedd o'r tu allan, e.e. rhieni, neu hyfforddwyr profiadol.



Sports and Physical Education

In general, the main aims of learning Physical Education are to encourage and help all children to live a healthy and vibrant life, and to promote the development of desirable qualities such as effort, fair play, playing together, perseverance, achievement and self-confidence.

The staff try to achieve these goals by offering a wide range of activities to children of all ages, within and outside the formal curriculum, challenging them to develop and improve their individual performances. These activities include Gymnastics, Dance, Swimming, Athletics, Outdoor and Adventure Activities, and Games.

Community facilities are used including the Gnoll Rugby Club playing field, the Tennis Courts and the local swimming pool, together with the school yard to ensure a wide range of opportunities for pupils to practice.

The children are taught by the school's teachers and every opportunity to gain expertise from outside is taken advantage of, e.g. parents, or experienced coaches.



Gosodwn gryn dipyn o bwyslais ar weithgareddau diwylliannol, adloniant a chwaraeon:

- gwersi ffidil, soddgrwth, telyn, chwythbrennau, gitâr ac offerynnau pres
- clybiau aml gamp yn wythnosol (ar ôl ysgol)
- timau rygbi, pêl rwyd, pêl droed, nofio, athletau, rhedeg traws gwlad a thenis
- cyrsiau preswyl mewn canolfannau astudiaethau agored, i blant Bl. 4 – 6
- cystadlu Eisteddfodol
- clybiau amrywiol
- ymarferion côr
- gwasanaethau a chyngherddau cyhoeddus
- ymweliadau addysgol
- ymweliadau â theatrau a sinemâu



We place a great deal of emphasis on cultural, entertainment and sporting activities:

- violin, cello, harp, woodwind, guitar and brass lessons
- multi-sport clubs weekly (after school)
- rugby, netball, football, swimming, athletics, cross country and tennis teams
- residential courses in open study centres, for children Yr. 4 – 6
- Eisteddfod competitions
- Various clubs
- choir practise
- public services and concerts
- educational visits
- visits to theaters and cinemas

Cyflwyniad

Rydym yn cydnabod bod gan bob athro gyfrifoldeb am blant ag anghenion dysgu ychwanegol. Fe fydd pob plentyn ag anghenion dysgu ychwanegol yn derbyn y ddarpariaeth ddysgu ychwanegol sydd ei hangen er mwyn cael cymaint o fynediad â phosibl i'r cwricwlwm.

Ymateb Graddoledig

Mae'n gyfrifoldeb ar bob athro ac athrawes i sicrhau fod darpariaeth ddysgu gynhwysol (ILPs) yn cael ei gweithredu er mwyn sicrhau fod *pob* plentyn yn gwneud cynnydd. Mae enghreifftiau o ILPs yn cynnwys gwahaniaethu effeithiol, mynediad i'r gornel 5 munud o lonydd, a defnydd o 'degan ffidget'.



'Mae'r gofal a'r arweiniad a gynigir i ddisgyblion sydd ag anghenion dysgu ychwanegol (ADY) yn gryfder.'

ESTYN 2024

Os nad ydy'r ILPs yma yn ddigonol, ac mae'r athro neu'r athrawes, neu riant y plentyn yn honni fod gan y plentyn ADY, yna cynhelir cyfarfod rhwng yr athro neu'r athrawes, y riant a'r CADY er mwyn ystyried os oes digon o dystiolaeth i gefnogi'r honiad yma.

Yma, gall y drafodaeth fod yn seiliedig ar arsylwadau yn ogystal ag asesiadau ffurfiol neu anffurfiol yr athro neu athrawes, neu unrhywbeth dystiolaeth arall sydd yn darparu tystiolaeth ynglŷn â chynnydd y plentyn.

Os oes, fe fydd Cynllun Datblygu Unigolyn (CDU) yn cael ei ffurfio sydd yn cyfeirio at y ffaith fod rhaid i'r plentyn i dderbyn darpariaeth ddysgu ychwanegol (ALP), er enghraifft ymyrraeth helaeth. Cyfrifoldeb yr athro neu'r athrawes, a'r CADY, yw sicrhau fod hyn y digwydd.

Os taw'r penderfyniad yw fod dim gyda'r plentyn ADY, ac felly bod dim angen CDU arnynt, yna rôl yr athro neu'r athrawes i fonitro cynnydd y plentyn yn ofalus a pharhau i ddarparu ILPs ar gyfer y dysgwr.

Mae cyd-weithio agos gyda thîm ADY yr awdurdod lleol yn ganolig i'r broses o ymateb graddoledig. Er enghraifft, mae'r CADY yn derbyn cyngor yn gyson oddi wrth y Seicolegydd Addysg, y tîm iaith a lleferydd a'r tîm lles ac ymddygiad er mwyn deall mwy ynglŷn â sut allwn ni gynnwys plant ADY, yn ogystal â phlant sydd a'r potensial o fod yn rhai ADY, yn y dysgu.

Introduction

We recognise that all teachers have responsibility for children with additional learning needs. All children with additional learning needs will receive additional learning provision required in order to have as much access to the curriculum as possible.

Graduated response

All teachers must ensure that inclusive learning provisions (ILPs) are implemented to ensure that all children make progress. Examples of ILPs include effective differentiation, access to the 5-minute corner of peace, and the use of a 'fidget toy'.



The care and guidance provided to pupils with additional learning needs (ALN) is a strength.

ESTYN 2024

If these ILPs are not sufficient, and the teacher or the child's parent claims that the child has ALN, then a meeting will be held between the teacher, the parent and the ALNCo to consider whether there is enough evidence to support this claim.

In this meeting, the discussion may focus on observations, the teacher's formal or informal assessments, and any other evidence that indicates the child's progress. If the evidence shows clearly that the child has ALN, an Individual Development Plan (IDP) will be formed, which refers to the fact that the child must receive additional learning provision (ALP), for example, extensive intervention. It is the responsibility of the teacher and the CADY to ensure that this happens.

If the decision is that the child does not have ALN, and therefore they do not need an IDP, then the teacher's role is to monitor the child's progress carefully and continue to provide ILPs for the learner.

Close collaboration with the local authority's ALN team is central to the process of a phased response. For example, the ALN regularly receives advice from the educational psychologist, the speech and language team and the wellbeing and behaviour team to understand more about how we can include ALN children, as well as children who have the potential to be ALN pupils, in learning.

Adrodd i rhieni

Fe fydd pob plentyn yn yr ysgol yn derbyn adroddiad ysgrifenedig cynhwysfawr sy'n cynnig crynodeb ar gyfer rhieni o gynnydd a chyraeddiadau eu plentyn ym mhob agwedd o fywyd yr ysgol ar hyd y flwyddyn academaidd. Fe fydd yr adroddiad yn galluogi rhieni i weld yn glir pa gynnydd a wnaed gan eu plentyn/plant a pha dargedau a bennir ar eu cyfer er mwyn hyrwyddo ac ysgogi'r cynnydd yma yn y dyfodol.

Cynhelir Noson Rieni yn yr ysgol o fewn pythefnos o ddsbarthu'r adroddiad, er mwyn rhoi cyfle gwerthfawr i rieni i drafod cynnwys yr adroddiad ysgrifenedig gyda'r athro/athrawes ac i drafod cynnydd.

Fe gynhelir Noson Rieni gynta'r flwyddyn academaidd yn ystod tymor yr Hydref. Cyfarfod neu sgwrs digon anffurfiol fydd hwn: cyfle i rieni ddod i wybod sut mae eu plant yn ymdopi ag athro/athrawes newydd, disgwyliadau newydd, neu drefn newydd.

Yn ogystal, fe gynhelir ail Noson Rieni yn nhymor y Gwanwyn i drafod cynnydd.

Cysylltiadau

Mae'r ysgol yn ystyried bod creu a chynnal perthynas weithiol agos gyda rhieni yn eithriadol bwysig. I'r diben hwn, croesewir rhieni i'r ysgol ar unrhyw adeg er mwyn trafod unrhyw broblemau sy'n codi ynghylch addysg neu lles eu plant. Efallai bydd eisiau trefnu apwyntiad o flaen llaw. Croesewir pob rhiant i ymuno â'n Cymdeithas Rieni Athrawon a Ffrindiau lwyddiannus. Anogir rhieni i gymryd rhan ym mywyd yr Ysgol.



Report to parents

Every child at the school will receive a comprehensive written report which offers a summary for parents of their child's progress and achievements in all aspects of school life throughout the academic year. The report will enable parents to see clearly what progress has been made by their child/children and what targets will be set for them in order to promote and stimulate this progress in the future.

A Parents' Evening is held at the school within two weeks of the report being distributed, in order to give parents a valuable opportunity to discuss the content of the written report with the teacher.

The first Parents' Evening of the academic year will be held during the Autumn term. This will be a fairly informal meeting or conversation: an opportunity for parents to find out how their children are coping with a new teacher, new expectations, or a new routine and to discuss progress made

In addition, a second Parents' Evening is held in the Spring Term.

Connections

The school considers that creating and maintaining a close working relationship with parents is extremely important. For this purpose, parents are welcome to the school at any time in order to discuss any problems that arise regarding their children's education or wellbeing. You may need to book an appointment in advance. All parents are welcome to join our successful Parents Teacher Association. Parents are encouraged to take part in school life.



Cyflwyniad

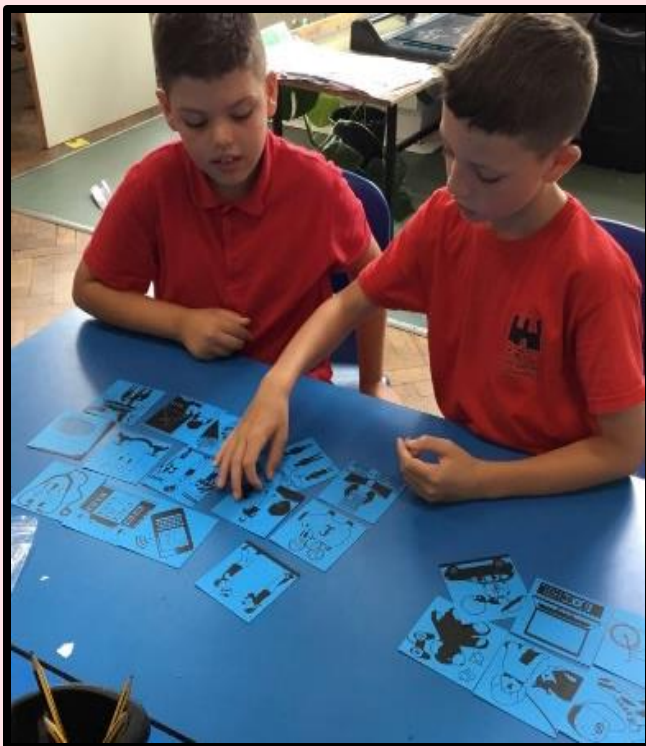
Mae'r mwyafrif o gŵynion yn ganlyniad camddealltwriaeth neu gyfathrebiad gwael. Os ydym yn benderfynol o ddatrys anhawster a fydd yn bodloni'r naill ochr a'r llall, credwn fod angen dealltwriaeth lawn o'r trefniadau ar gyfer gwneud cŵyn yn ogystal ag agwedd gadarnhaol tuag at wella'r sefyllfa.

Trefn

Dylai rhiant sy'n dymuno cwyno am drefniadaeth neu gynnwys y cwricwlwm ddilyn y drefn ganlynol:

- Cysylltu â'r pennaeth. Gwneir ymchwiliad i'r achos gan y Pennaeth (neu aelod o'r Uwch Dîm Rheoli a enwebir gan y Pennaeth) ac fe ymatebir i'r rhiant yn uniongyrchol. Dylai mân-gŵynion gael eu trafod â'r athro/athrawes unigol. Os na fydd rhiant yn fodlon â'r ymateb, yna dylid cysylltu â'r pennaeth.
- Os na fydd rhiant yn fodlon â'r ymateb, dylid ysgrifennu at Gadeirydd y Corff Llywodraethu. Gwneir ymchwiliad gan aelodau Pwyllgor Cwynion y Corff Llywodraethu ac fe ymatebir ganddynt.

* Mae Corff Llywodraethu Ysgol Gymraeg Castell-nedd wedi penderfynu nad yw gweithdrefnau cwyno'r ysgol yn darparu ar gyfer cam apelio.



Making a Complaint

Ein nod yw rhoi cyfle i bob plentyn lwyddo



Caredigrwydd.

Cymreictod.

Cymuned.

Introduction

The majority of complaints are the result of misunderstanding or poor communication. If we are determined to resolve a difficulty that will satisfy both sides, we believe that a full understanding of the arrangements for making a complaint is needed as well as a positive attitude towards improving the situation.

Order

A parent wishing to complain about the organisation or content of the curriculum should follow the following procedure:

Contact the Head Teacher. The case will be investigated by the Headteacher (or a member of the Senior Management Team nominated by the Headteacher) and the parent will be responded to directly. Minor complaints should be discussed with the individual teacher. If a parent is not satisfied with the response, then the headteacher should be contacted.

If a parent is not satisfied with the response, they should write to the Chair of the Governing Body. An investigation will be carried out by members of the Governing Body's Complaints Committee and they will respond.

** The Governing Body of Ysgol Gymraeg Castell-nedd has decided that the school's complaints procedures do not provide for an appeal stage.*



Ein nod

Ein nod yn Ysgol Gymraeg Castell-nedd yw cynnig cyfleoedd cyfartal i bob disgybl waeth bynnag eu rhyw, hil, crefydd a'u hamgylchiadau neu gefndir cymdeithasol. Credwn yn gryf fod pob plentyn o werth hafal a chyfartal waeth bynnag eu datblygiad a'u cyrhaeddiad dysgu.

Parch

Fe fydd ein cymuned ysgol yn hyrwyddo amgylchedd fydd yn adlewyrchu'r parch a ddangosir tuag at bob unigolyn sy'n myned i'n hysgol. Trwy ein cwricwlwm agored a chudd, ceisiwn ddatblygu goddefgarwch a pharch tuag at bobl a diwylliannau eraill gan sicrhau cymuned a seilir ar ymddiriedaeth a chydweithrediad. Credwn fod ymwybyddiaeth o gyfleoedd cyfartal yn arwain at arfer addysgiadol da, ac yn sail ar gyfer datblygu medrau a thalentau pob unigolyn.

Pwysigrwydd pob disgybl

Teimlwn ei bod hi'n hanfodol fod pob disgybl yn cael eu trin yn gyfartal a'u galluogi, trwy gyfleoedd cyfartal, i ddatblygu i'w llawn botensial. Ein nod yw cyflwyno'r sgiliau, gwybodaeth, cysyniadau ac agweddau i'n plant sy'n angenrheidiol ar gyfer gwaith a bywyd. Cyfleoedd cyfartal yw'r sail ar gyfer datblygu sgiliau a thalentau pob unigolyn. Sylweddolwn y bydd cyfleoedd cyfartal yn broses barhaus o her, a gobeithiwn trwy ddylanwad y cartref a'r gymuned y bydd plant a rhieni yn cyfrannu at weithredu'r polisi.

Mae'n fwriad gennym i adolygu ein polisi yn gyson, yn unol â datblygiadau newydd.



Our aim

Our aim at Ysgol Gymraeg Castell-nedd is to offer equal opportunities to all pupils regardless of their gender, race, religion and their circumstances or social background. We strongly believe that all children are of equal value regardless of their development and learning achievement.

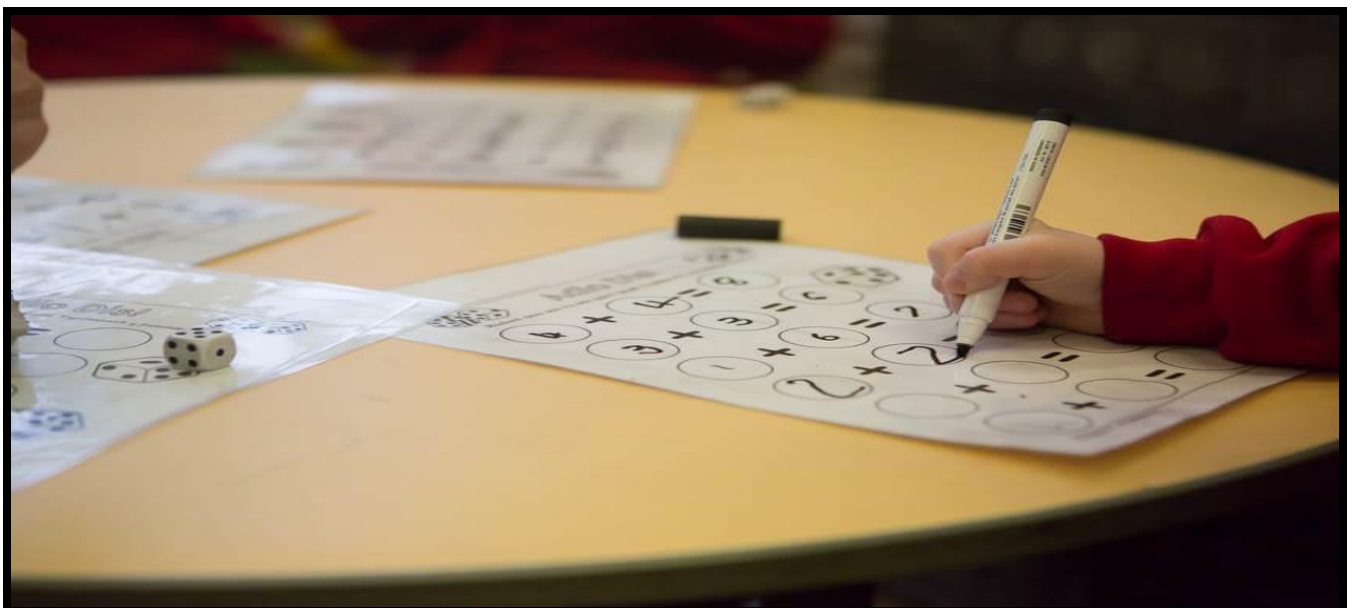
Respect

Our school community will promote an environment that reflects the respect shown towards each individual who goes to our school. Through our open and discreet curriculum, we try to develop tolerance and respect towards other people and cultures ensuring a community based on trust and cooperation. We believe that awareness of equal opportunities leads to good educational practice, and is the basis for developing the skills and talents of each individual.

The importance of every pupil

We feel that it is essential that all pupils are treated equally and enabled, through equal opportunities, to develop to their full potential. Our aim is to introduce our children to the skills, knowledge, concepts and attitudes necessary for work and life. Equal opportunities are the basis for developing the skills and talents of each individual. We realise that equal opportunities will be a continuous process of challenge, and we hope that through the influence of the home and the community, children and parents will contribute to the implementation of the policy.

We intend to review our policy regularly, in line with new developments.



Cysylltiadau

Cyngor y Fwrdeistref Sirol yw'r awdurdod derbyn ar gyfer pob ysgol gynradd ac uwchradd a gynhelir yn y gymuned.

Mabwysiadwyd polisi'r Awdurdod Addysg Lleol (A.A.LL.) ar gyfer derbyniadau i'r ysgol gan y Corff Llywodraethu. Gallwch ddod o hyd i wybodaeth bellach ar-lein trwy fynd at dudalen cartref 'Cyngor Bwrdeistref Sirol Castell-nedd Port Talbot, a dilyn y cysylltiadau canlynol: Dysgu > Ysgolion > Llawlyfr Gwybodaeth i rieni

Bydd yr ysgol yn dilyn canllawiau'r A.A.LL. ar gyfer derbyn disgyblion ag anableddau. Ein nod yw creu cyfleoedd cyfartal i bob disgybl. Ceir rhai cyfleusterau i'r anabl ar y safle. Mae gan yr ysgol Bolisi Mynediad sydd wedi ymrwymo i gynhwysiad.



Polisi Taliadau ac Ad-daliadau

Mae'r ysgol yn cadw at ofynion Deddf Addysg 1988 (Adran 110) a'r Canllawiau a gynhyrchir gan yr Awdurdod Addysg Lleol.

Wrth drefnu rhai o weithgareddau'r ysgol, fe all fod costau'n codi, ac yn sgil hyn fe ellir gofyn i rieni gyfrannu'n wirfoddol i gefnogi'r gweithgareddau hyn. Byddai rhieni'n cael gwybodaeth am natur y gweithgaredd, ac er nad oes orfodaeth i gyfrannu, gallai'r gweithgaredd a fwriadwyd fod mewn perygl o gael ei ganslo oherwydd diffyg arian.

Archwilio Cynlluniau Gwaith a Dogfennau Eraill

Yn ôl Deddf Diwygio Addysg 1988, mae hawl gan rieni, drwy drefniant blaenorol, weld amrywiol ddogfennau gan gynnwys Gorchmynion y Cwricwlwm Cenedlaethol a'r Cynlluniau Gwaith a ddilynir.

Gellir gwneud y trefniadau hyn gyda'r Pennaeth.

Mae nifer o'n polisiau i'w cyrchu ar ein Gwefan Ysgol.



Connections

The County Borough Council is the admissions authority for all infant, junior, primary and secondary schools maintained in the community.

The policy of the Local Education Authority (LAA) for admissions to the school has been adopted by the Governing Body. You can find further information online by going to the home page of Neath Port Talbot County Borough Council, and following the following links: Learning > Schools > Information handbook for parents

The school will follow the guidelines of the LEA for accepting pupils with disabilities. Our aim is to create equal opportunities for all pupils. There are some facilities for the disabled on site. The school has an Access Policy which is committed to inclusion.



Payments and Refunds Policy

The school adheres to the requirements of the Education Act 1988 (Section 110) and the Guidelines produced by the Local Education Authority.

When organising some of the school's activities, costs may arise, and as a result parents may be asked to contribute voluntarily to support these activities. Parents would receive information about the nature of the activity, and although there is no compulsion to contribute, the intended activity could be at risk of being cancelled due to a lack of funds.

Examination of Work Plans and Other Documents

According to the Education Reform Act 1988, parents have the right, by prior arrangement, to see various documents including the National Curriculum Orders and the Work Plans being followed.

These arrangements can be made with the Headteacher.

Many of our policies can be accessed on our School Website.





Ysgol Gymraeg
Castell-nedd

YGG Castell-nedd

17 Woodland Rd, Castell-nedd, SA11 3AL

Rhif ffon: 01639 637701

E-bost: swyddfa@yggcastellnedd.npt.school

Gwefan: <https://www.yggcastell-nedd.co.uk/>